

USB Connection Guide

When using USB online, different PC software and hardware may have different results and solutions.

1. When your PC system is Windows XP/7, the system will not recognize the device properly (as shown in Figure 1), and you need to install the STM32 virtual serial port driver.

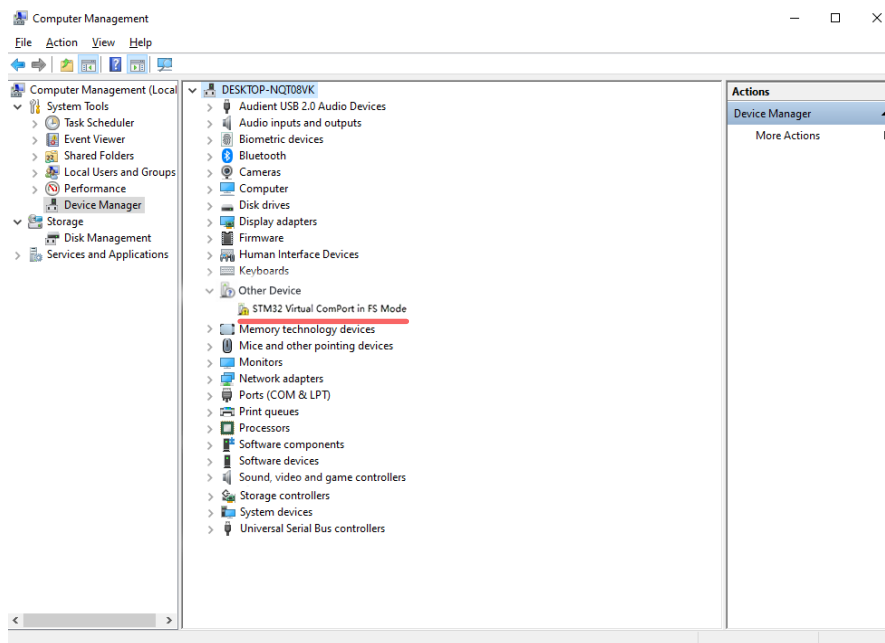


Figure 1

2. When your PC system is Windows 8/10,

Windows specifications

Edition	Windows 10 Pro
Version	22H2
Installed on	08/06/2022
OS build	19045.3930
Experience	Windows Feature Experience Pack 1000.19053.1000.0

The system will correctly recognize the device to the STM32 virtual serial device and can be connected normally without any settings. (Figure 2)

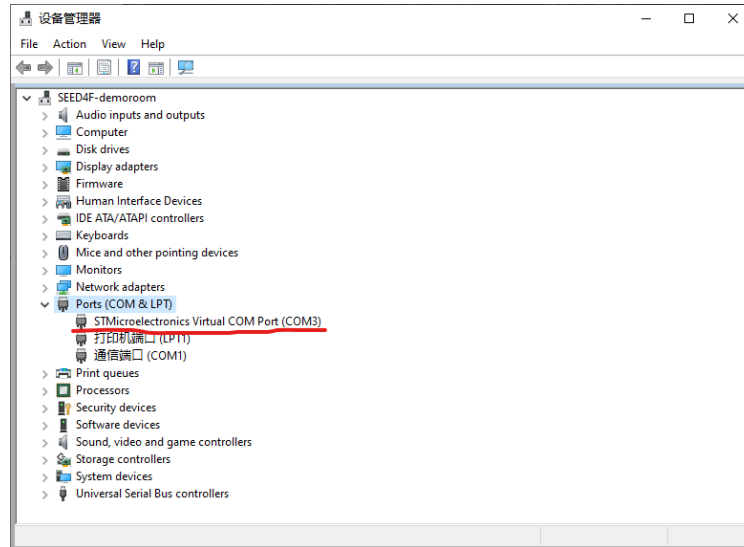


Figure 2

3. When the serial port number is too high (greater than 16) or the serial port number is occupied, you can try - Properties - to change the serial port number, or empty the registry to reduce the serial port number.

Right-click on "This PC"— **Properties** -- Device Manager -- Ports(COM and LPT) to view the current serial port number.(Figure 3)

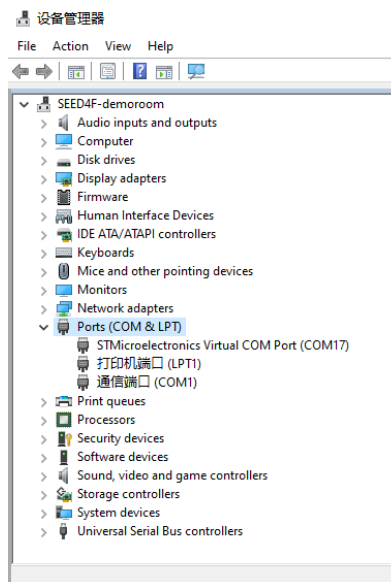


Figure 3

You can see that the serial port number is 17, double-click this device or right-click the **Properties** to enter the following interface (Figure 4)

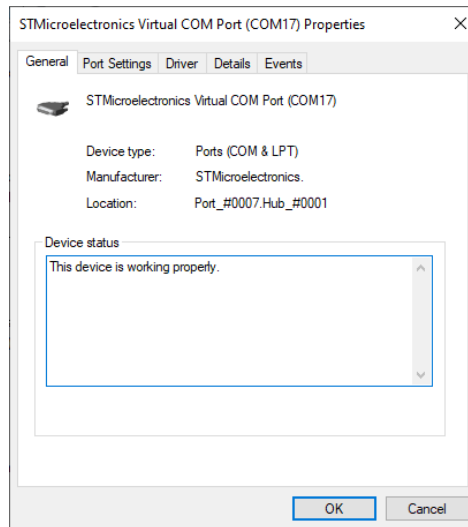


Figure 4

Click Port Settings(Figure 5)

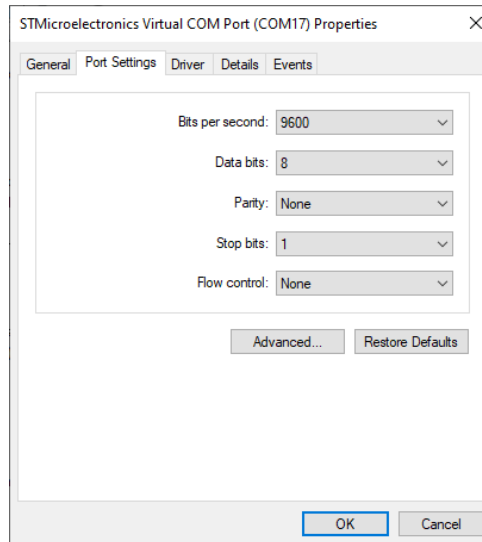


Figure 5

Click **Advanced** to select a lower port number in the COM port number
(Figure 6)

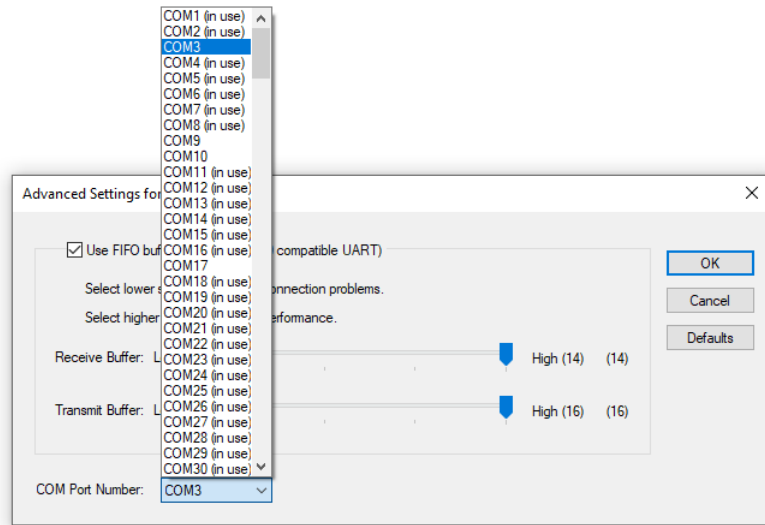


Figure 6